

**NEW
MODEL**
Made in Sweden


SmartPlanes
2016

Weighs
Under 1.3 kg
Inc Camera
**UNDER
\$25K**

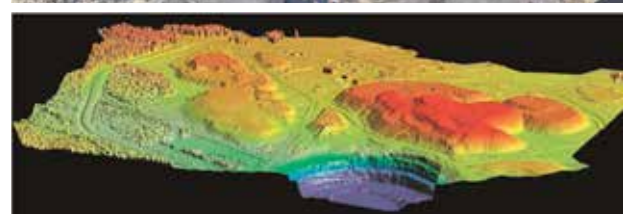
CASA - New Under 2Kg laws Sept 2016

UNMANNED AERIAL SURVEY & MAPPING

- Hand launch and auto lands
- 16.2 MegaPixel Ricoh
- New Android touch screen flight planning
- One person operation



ACCURACY • PERFORMANCE • RELIABILITY



EASY TO USE

Simply hand launch and "Freya" completes the mission and lands itself next to take off location.

The Freya system is very easy to use and requires a minimum of training. The fact that the pilot has the option of direct control of the SmartOne aircraft gives the ability to operate from difficult sites and perform precision landings within a few meters.

RUGGED AND ROBUST

The Freya aircraft is rugged and robust and will do the job for many years. The construction with a large cargo bay makes it very versatile and possible to complete survey projects faster and more efficiently.

FAST AND ECONOMICAL WITH HIGH ACCURACY

The system enables production of detailed orthophotos and digital surface models at a fraction of the cost of conventional methods whenever needed.

The aerial imagery collected can be viewed a few minutes after landing with our aerial mapping software which produces geo-referenced photo mosaics on-site. The UAS aerial image data can be processed with most post processing software into orthophotos or DSMs with very high accuracy.

Agisoft



PhotoScan

Ask about AGI-SOFT – SALES – TRAINING



Model: **Freya**

Aircraft	1.2 m span, shock resistant, high strength skin, Lexan fuselage, large adaptable cargo bay
Take-off weight	1.2 kg including battery and camera
Propulsion	Electric motor
Telemetry	868MHz, 900 MHz or 2.4 GHz (ISM), range up to 6 km
Performance	Hand launch Precision landing in automatic or assisted modes Recommended maximum wind 13 m/s, 47 km/h Maximum cruise speed 16 m/s, 57 km/h Endurance normal mission 50 min with reserves
Coverage	0.1 to 10 km ² depending on mission settings
Weather	-20 to +40 C, snow or light rain
Flight modes	Auto, Assisted, Manual
Cameras	16.2 with large APS-C CMOS sensor 16.2 MP NIR compact camera Thermal, Multispectral and Live video sensors Nadir and oblique view, optional Resolution dependent on flying height, 1-20 cm/pixel

Hands on Training • Rent-To-Own option • Hire



RPAS courses in every state